



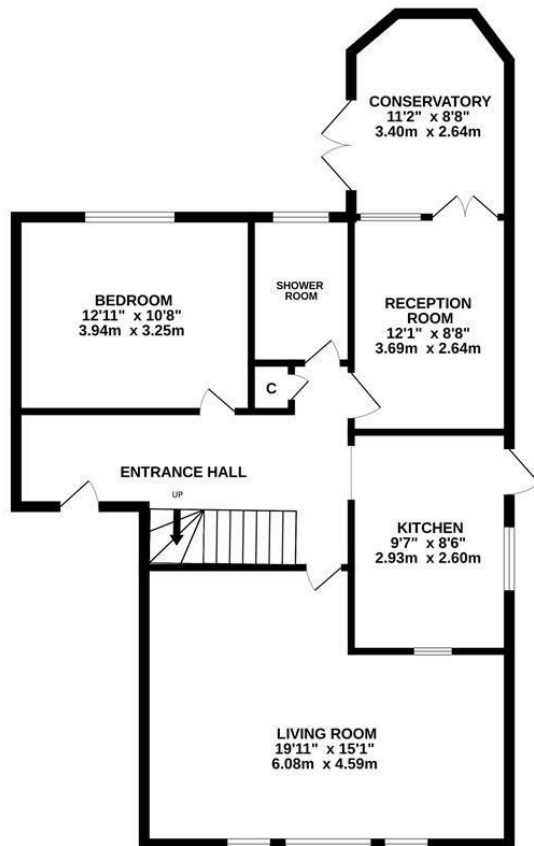
## Foxcote, St. Leonards-On-Sea TN37 7HJ

Offers in excess of £370,000

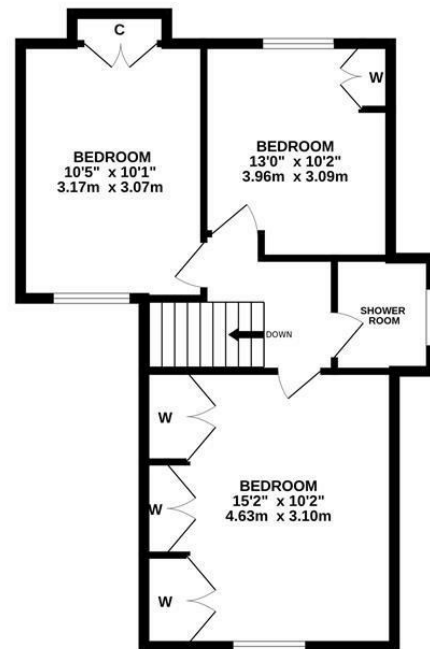


A bright and spacious four bedroom LINK-DETACHED CHALET STYLE BUNGALOW with a GARAGE AND OFF ROAD PARKING situated in a quiet CUL-DE-SAC within a HIGHLY SOUGHT AFTER LOCATION. It's enviably positioned within walking distance to popular schools and within easy reach to good transport links, Alexandra Park and local shops. The accommodation here is arranged as a LARGE LIVING ROOM which is positioned at the front of the property and there is a modern fitted kitchen. There is a SEPARATE DINING ROOM with double doors opening to a conservatory which enjoys access out to the garden. There is also a large double bedroom on the ground floor along with a wet room with w/c. The upper floor houses three further bedrooms together with a second shower room. Externally the rear garden is mainly laid to lawn offering a family friendly space and at the front of the property there is a DRIVEWAY providing off road parking for multiple vehicles leading to the garage. Being sold with NO ONWARD CHAIN this fantastic property would make the PERFECT FAMILY HOME and is not to be missed.

GROUND FLOOR  
891 sq.ft. (82.8 sq.m.) approx.



1ST FLOOR  
567 sq.ft. (52.7 sq.m.) approx.



TOTAL FLOOR AREA : 1458 sq.ft. (135.5 sq.m.) approx.

Whilst every attempt has been made to ensure the accuracy of the floorplan contained here, measurements of doors, windows, rooms and any other items are approximate and no responsibility is taken for any error, omission or mis-statement. This plan is for illustrative purposes only and should be used as such by any prospective purchaser. The services, systems and appliances shown have not been tested and no guarantee as to their operability or efficiency can be given.

Made with Metropix ©2025

